

San Joaquin County
2021 Redistricting
Draft Plans



Agenda

Things we will cover:

- Fair Maps Act Criteria
- Three Draft Plans
 - Plan A2
 - Plan A2 Smooth (D1 Compact)
 - Plan B2
 - Plan B2 Smooth (D1 Compact)
 - Plan D – Cores of Existing Districts
- Next Steps

Traditional Redistricting Principles

Complying with the Fair Maps Act

The Fair Maps Act passed by the Legislature mandates a set of criteria we must follow when drawing district plans.

- Relatively equal size - people, not citizens
- Contiguous – districts should not hop/jump
- Maintain “*communities of interest*”
- Follow city and census designated place boundaries
- Keep districts compact – appearance/function

From COI to Draft Maps

Getting from input to new proposed maps

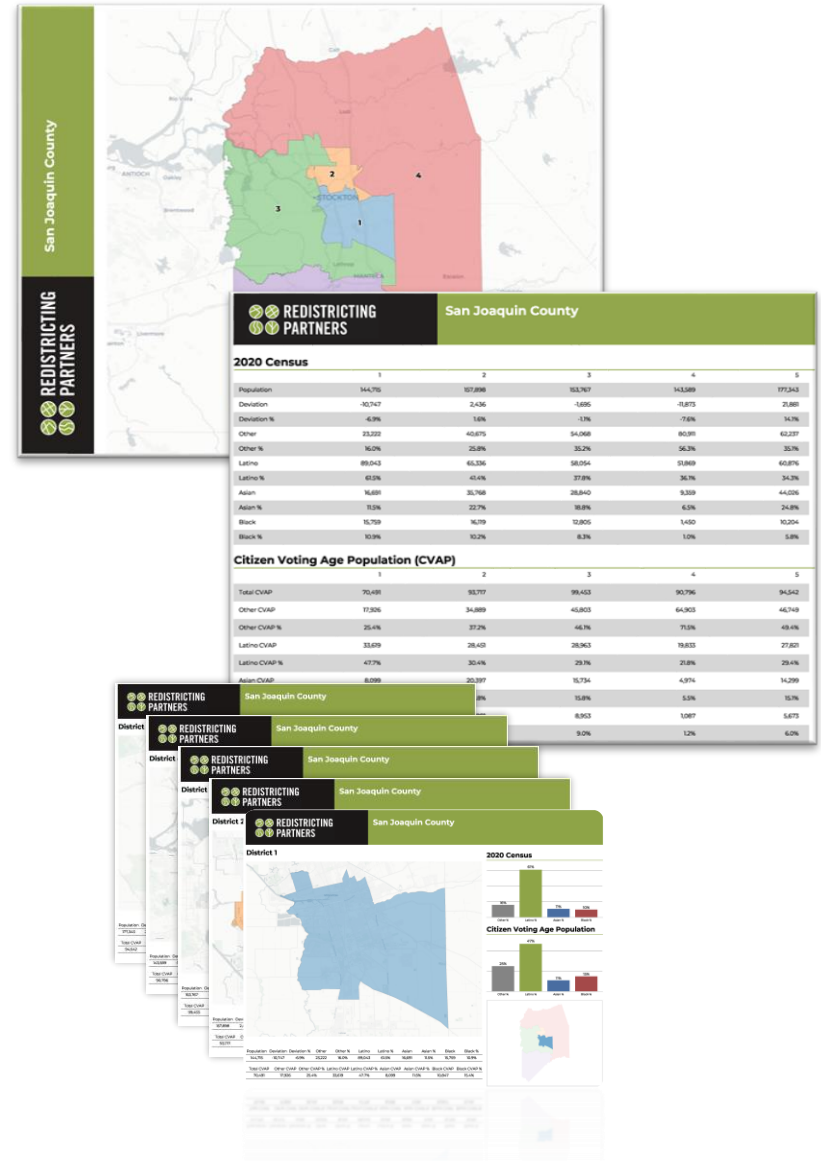
Redistricting Partners needs your feedback on these potential draft plan versions.

- All plans will follow the required criteria, VRA, Compactness, Contiguity, equal population, etc.
- Need feedback from the Redistricting Advisory Commission and the community on potential versions as we're working toward a recommendation to the Board.

From COI to Maps

With the Fair Maps Act requiring counties to include the public input in the redistricting process, we move redistricting out into the public, with maps driven by Community of Interest testimony.

- **Input from community drives process** with multiple ways for the public to engage.
- **Rules for process** emphasize the importance of traditional criteria and minimizing divisions of neighborhoods.
- **Releasing maps for feedback** – today we will see plans to spark more public engagement.



Communities of Interest

Outreach Hearings & Public Testimony

After three outreach hearings, many DistrictR submitted maps, and multiple RAC Meetings, we've received public and Commissioner input. The themes of testimony received:

- Unite Tracy with Mountain House
- Respect the rural/agricultural areas and their unique interests within the County by creating Western and Eastern rural districts
- Respect the Delta and that it is in at least two districts
- Stockton must be split because of its size – look to Lodi USD, major thoroughfares, and neighborhood lines
- Don't split Manteca into multiple districts
- Unify the Port in one District



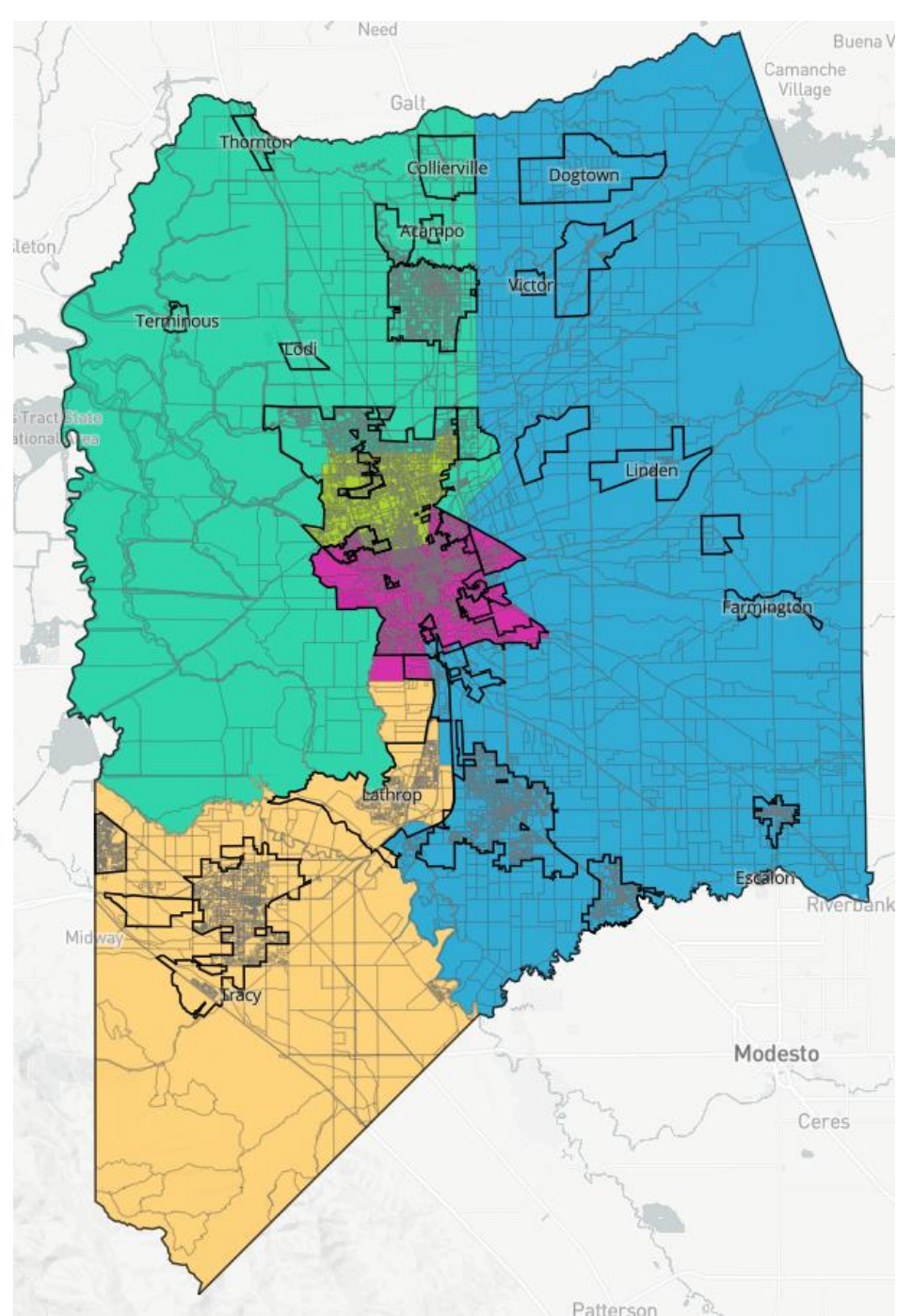
Map Submissions

PE

DistrictR Map ID 62833

Total Deviation: 2.4%

District Highest Latino CVAP: 48.7%





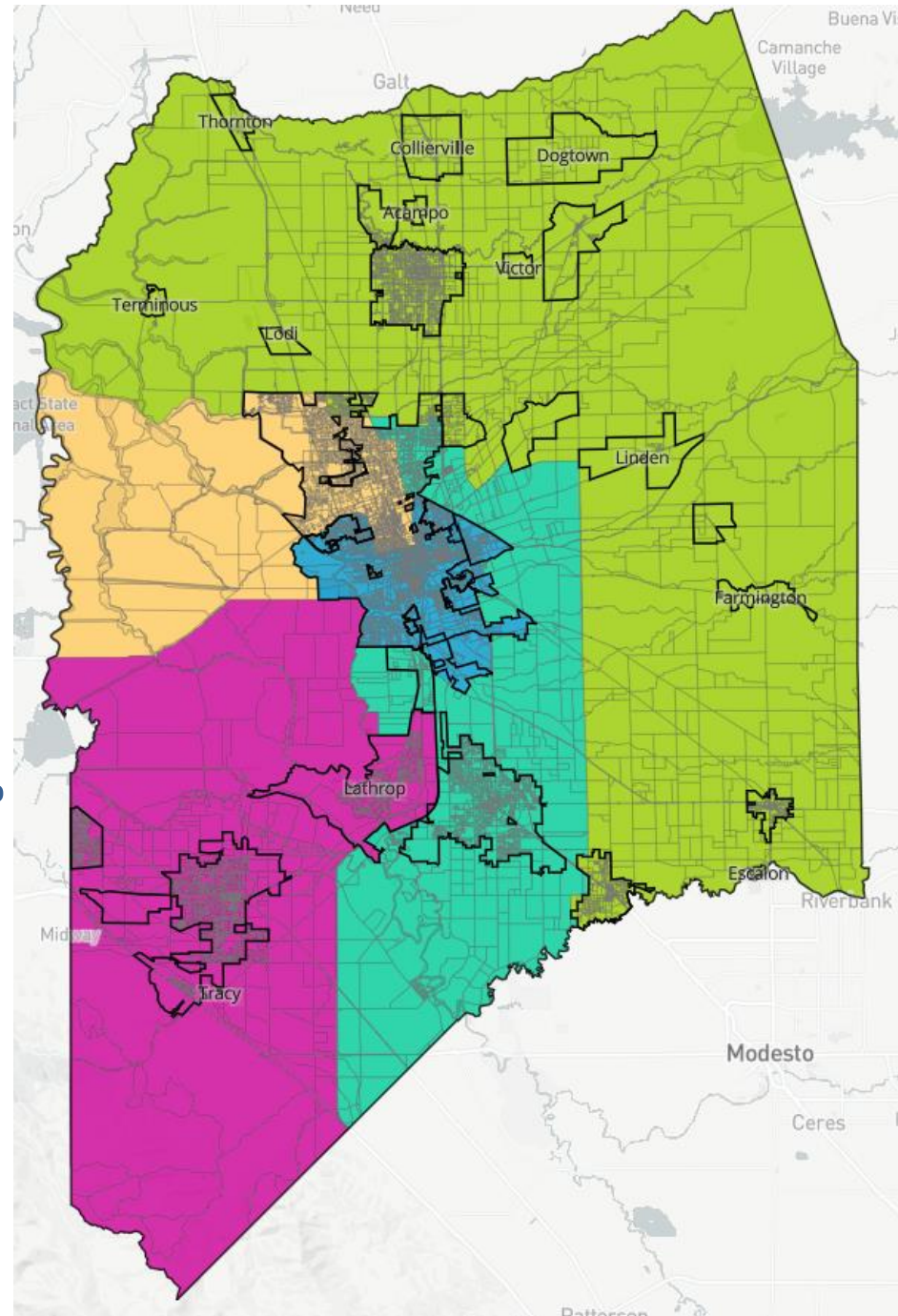
Map Submissions

Baby Bear VRA

DistrictR Map ID 63485

Total Deviation: 0.3%

District Highest Latino CVAP: 49.1%



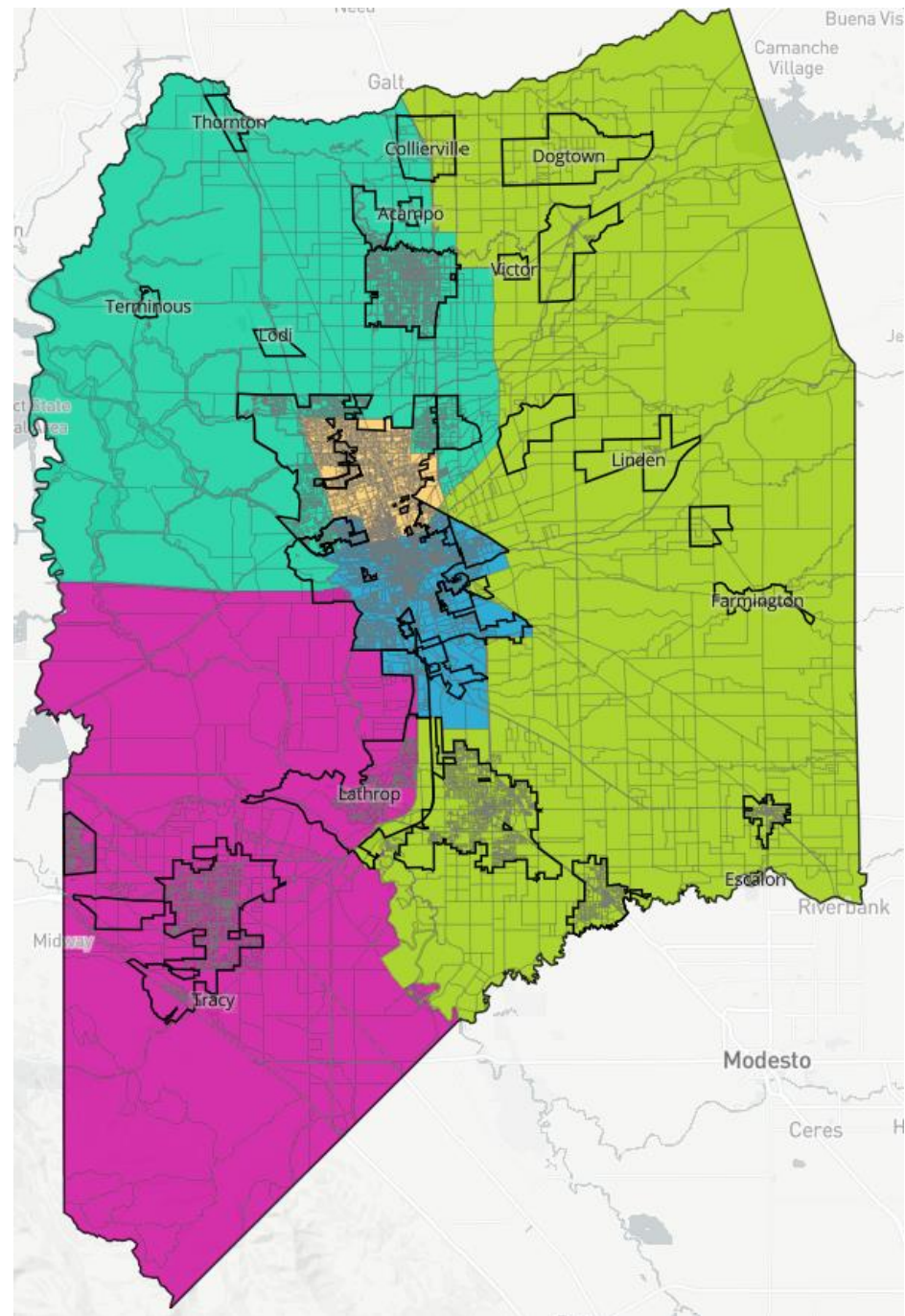


Map Submissions

DistrictR Map ID 63514

Total Deviation: 4.0%

District Highest Latino CVAP: 48.5%

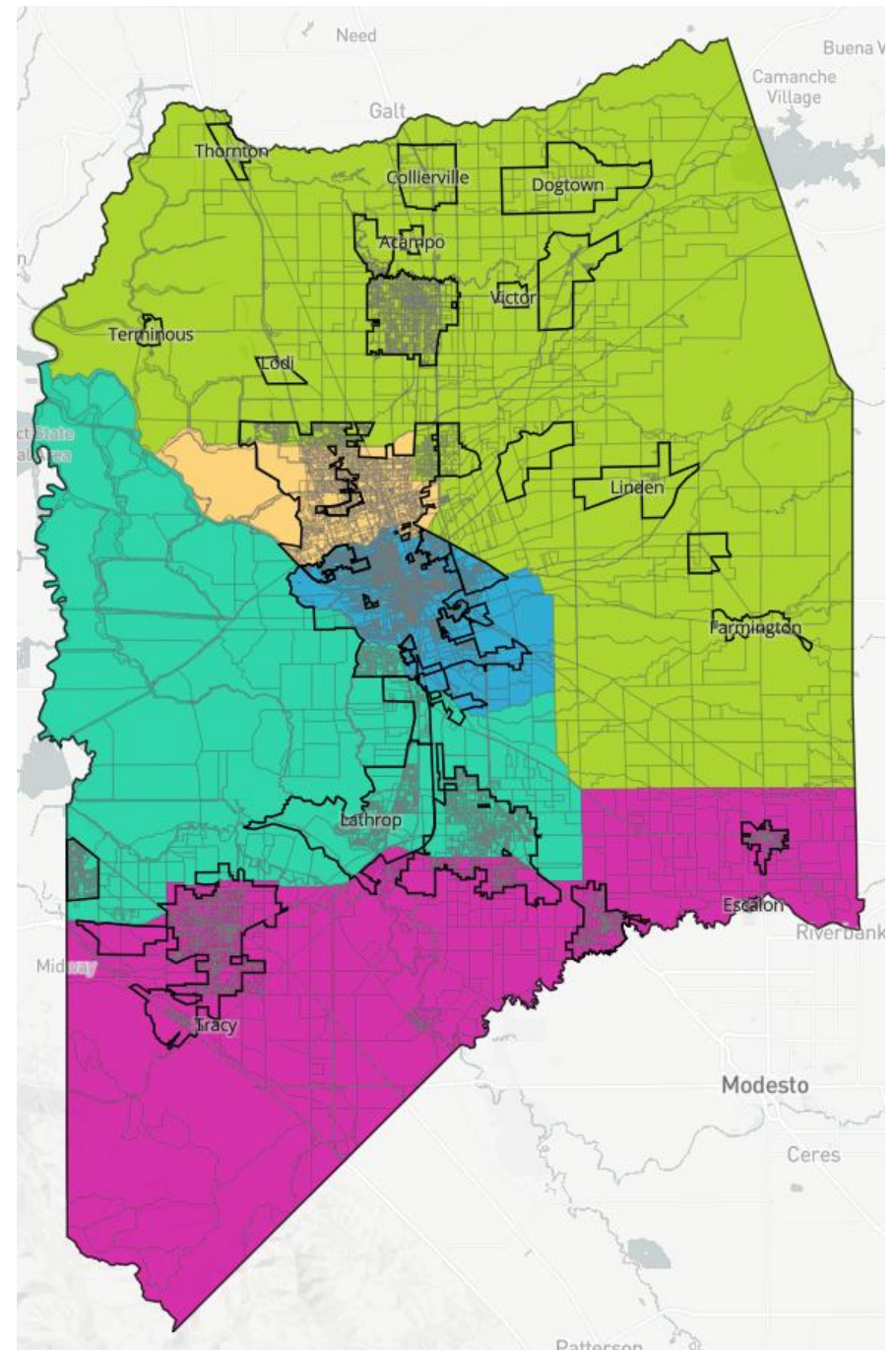


Map Submissions

DistrictR Map ID 63523

Total Deviation: 4.5%

District Highest Latino CVAP: 47%

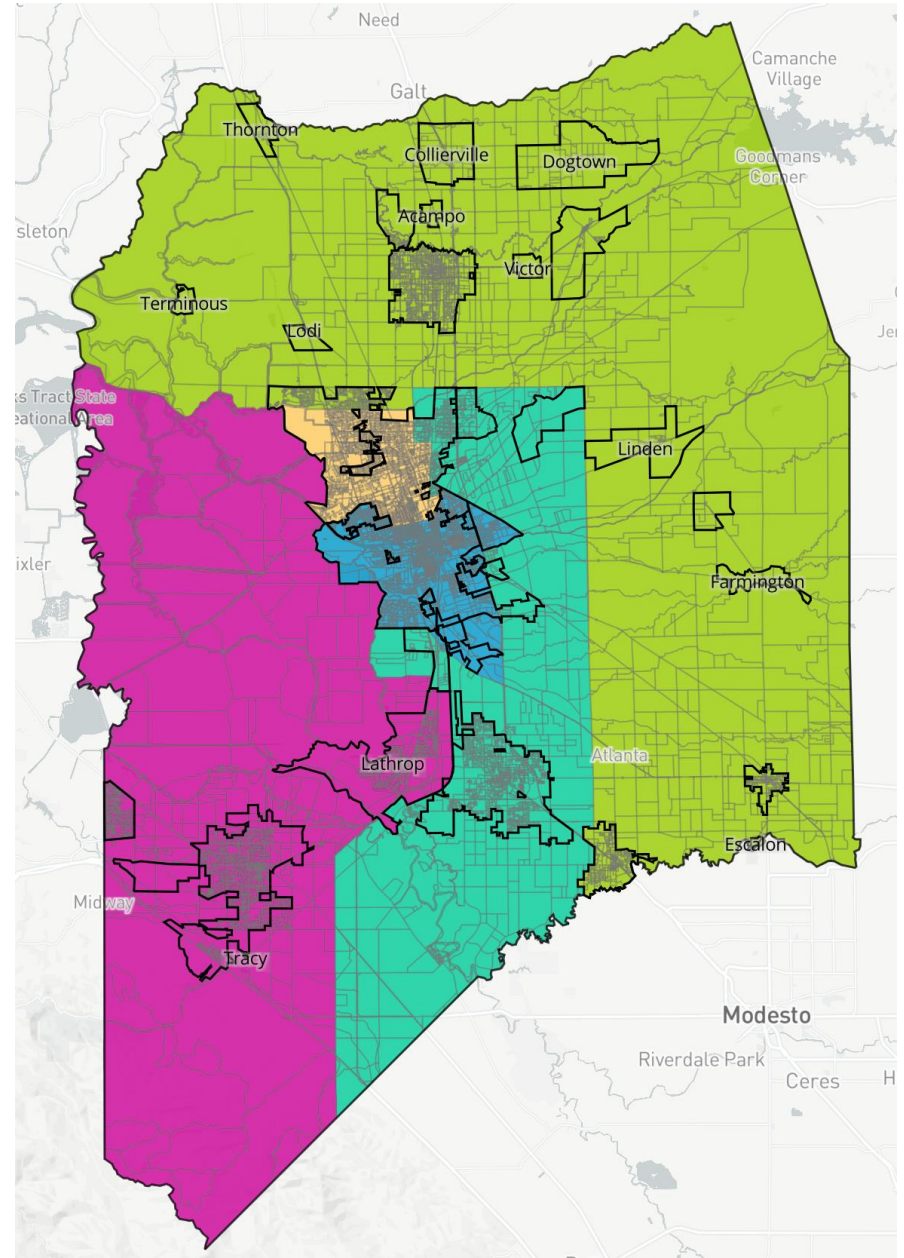


Map Submissions

B4Clan #1 (Morada=D3, Ripon=D4)
DistrictR Map ID 67146

Total Deviation: 1.1%

District Highest Latino CVAP: 49.5%

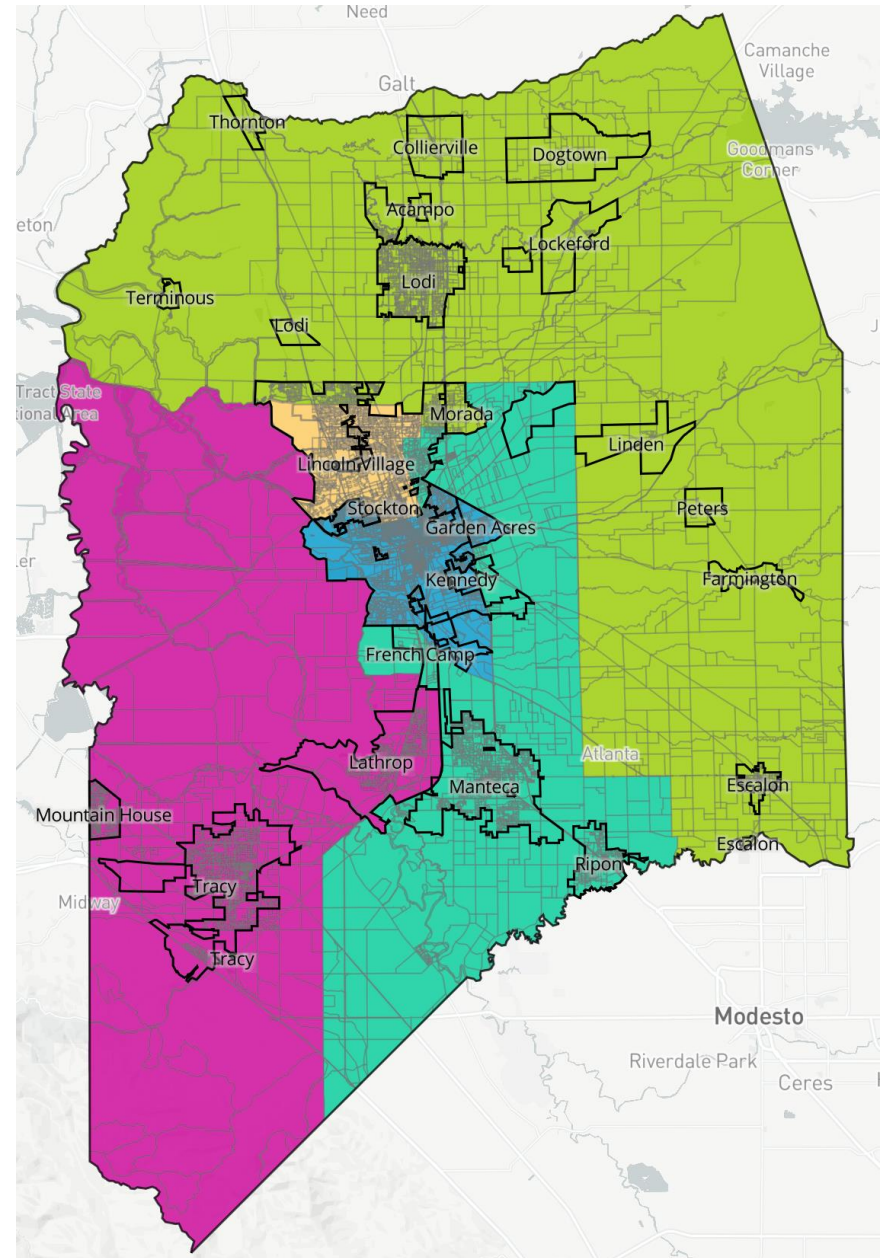


Map Submissions

B4Clan #2 (Morada=D4, Ripon=D3)
DistrictR Map ID 67149

Total Deviation: 2.2%

District Highest Latino CVAP: 49.5%

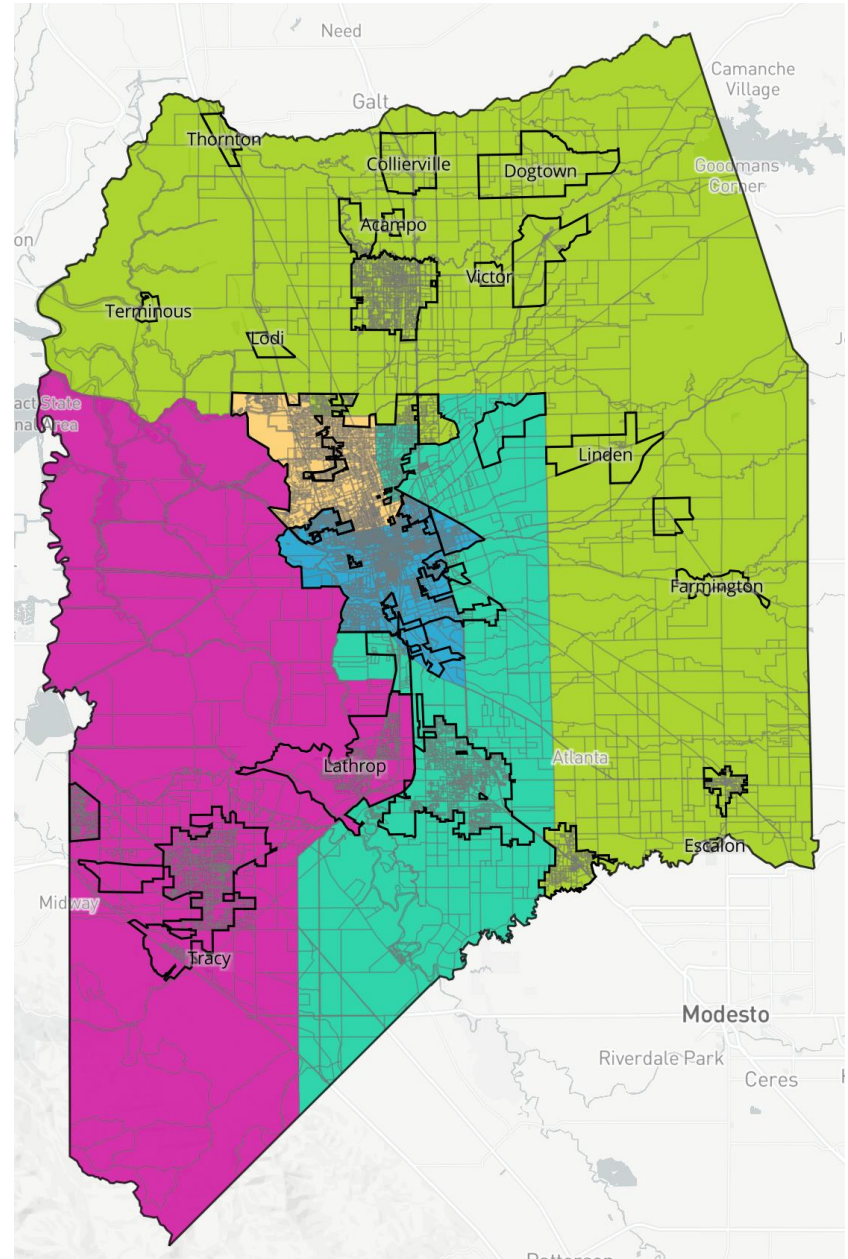


Map Submissions

B4Clan #3 (Morada=D4, Ripon=D4)
DistrictR Map ID 67235

Total Deviation: 0.7%

District Highest Latino CVAP: 49.5%

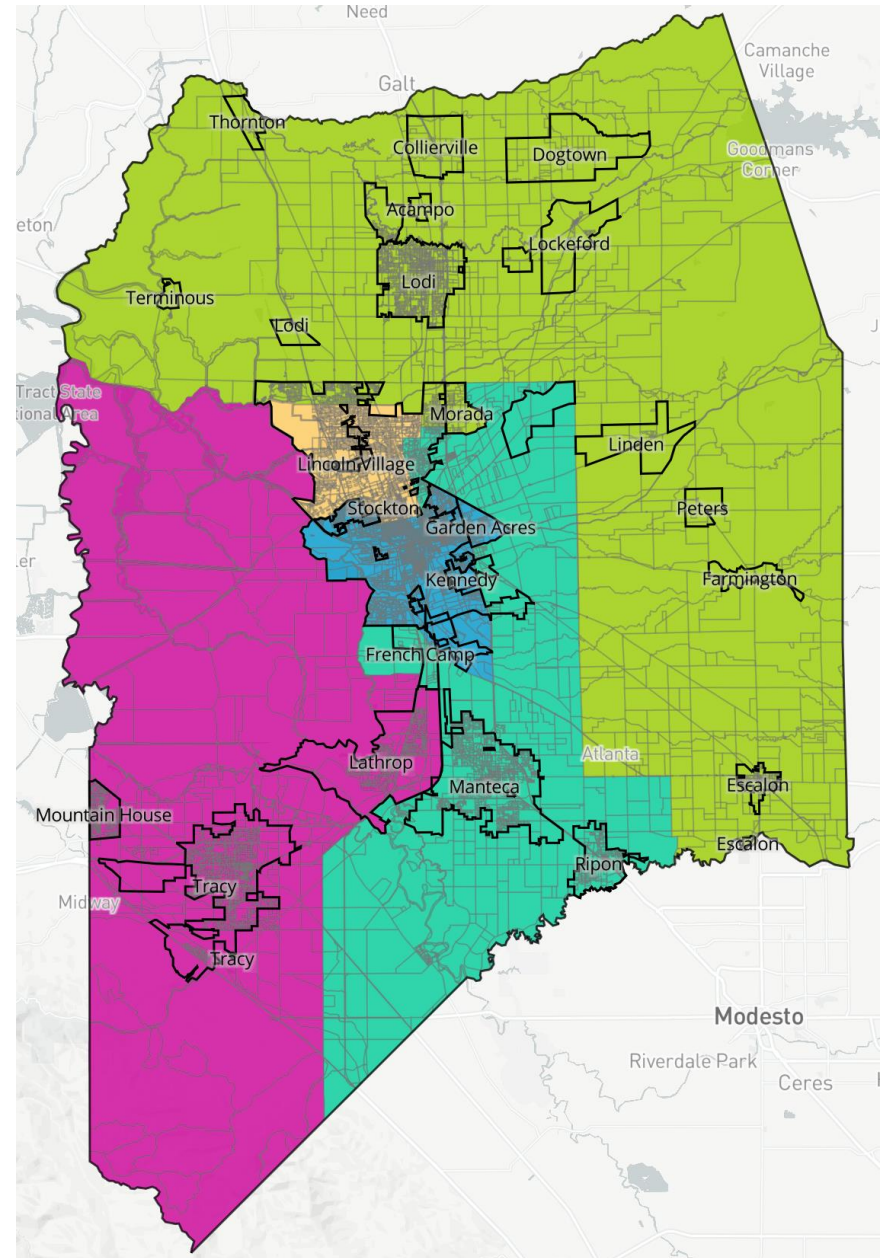


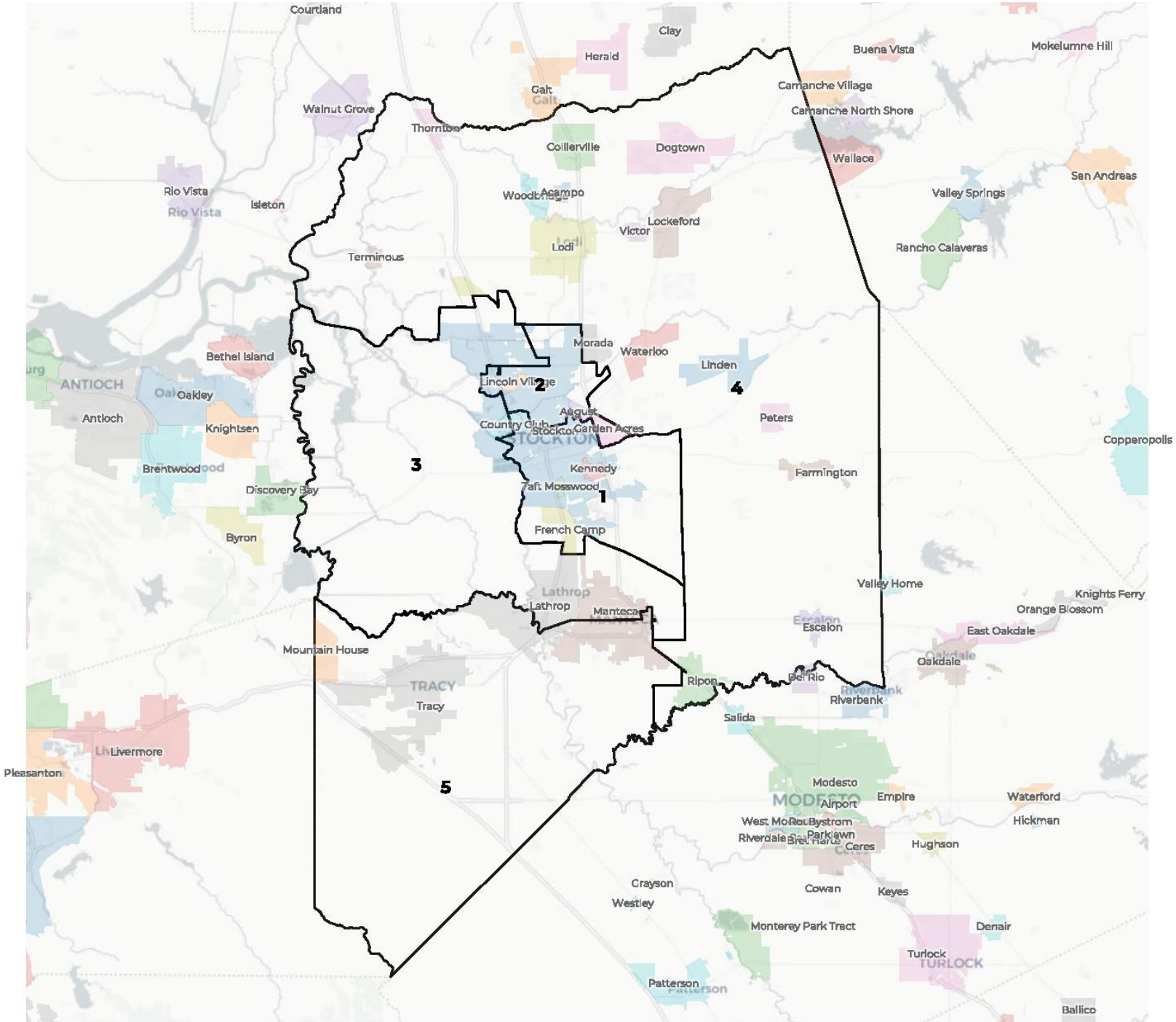
Map Submissions

B4Clan #4 (Morada=D3, Ripon=D3)
DistrictR Map ID 67899

Total Deviation: 1.3%

District Highest Latino CVAP: 49.5%





2020 Census

	1	2	3	4	5
Population	144,715	157,898	153,768	143,587	177,345
Deviation	-10,748	2,435	-1,695	-11,876	21,882
Deviation %	-6.9%	1.6%	-1.1%	-7.6%	14.1%
Other	23,222	40,671	54,068	80,912	62,238
Other %	16.0%	25.8%	35.2%	56.4%	35.1%
Latino	89,043	65,336	58,055	51,868	60,876
Latino %	61.5%	41.4%	37.8%	36.1%	34.3%
Asian	16,691	35,771	28,840	9,358	44,026
Asian %	11.5%	22.7%	18.8%	6.5%	24.8%
Black	15,759	16,120	12,805	1,449	10,205
Black %	10.9%	10.2%	8.3%	1.0%	5.8%

Citizen Voting Age Population (CVAP)

	1	2	3	4	5
Total CVAP	70,491	93,717	99,453	90,796	94,542
Other CVAP	17,926	34,889	45,803	64,903	46,749
Other CVAP %	25.4%	37.2%	46.1%	71.5%	49.4%
Latino CVAP	33,619	28,451	28,963	19,833	27,821
Latino CVAP %	47.7%	30.4%	29.1%	21.8%	29.4%
Asian CVAP	8,099	20,397	15,734	4,974	14,299
Asian CVAP %	11.5%	21.8%	15.8%	5.5%	15.1%
Black CVAP	10,847	9,981	8,953	1,087	5,673
Black CVAP %	15.4%	10.7%	9.0%	1.2%	6.0%

Draft Plan A2

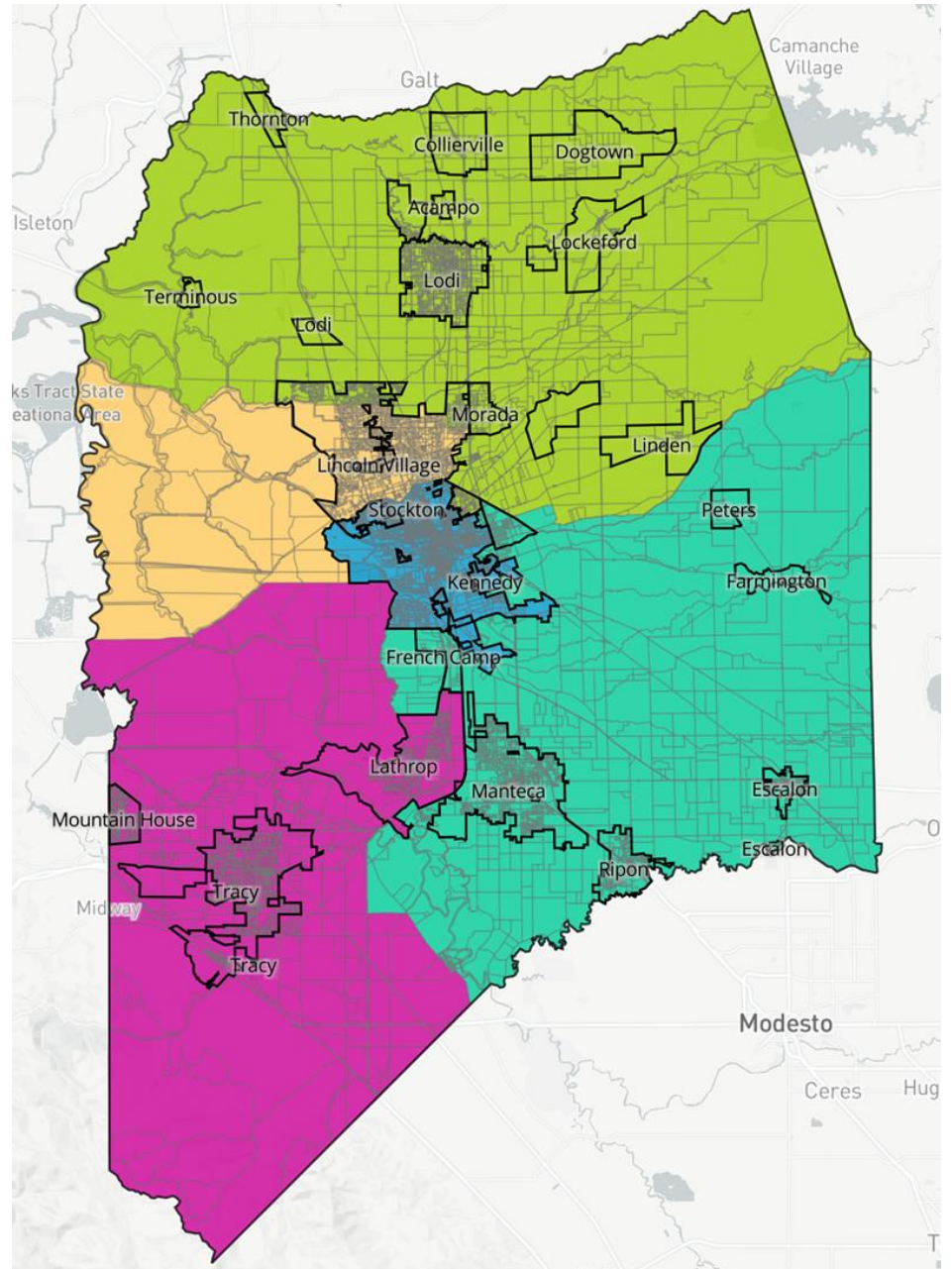
Based on the map received via DistrictR with changes to comply with the Federal Voting Rights Act, the Fair Maps Act, and other public input.

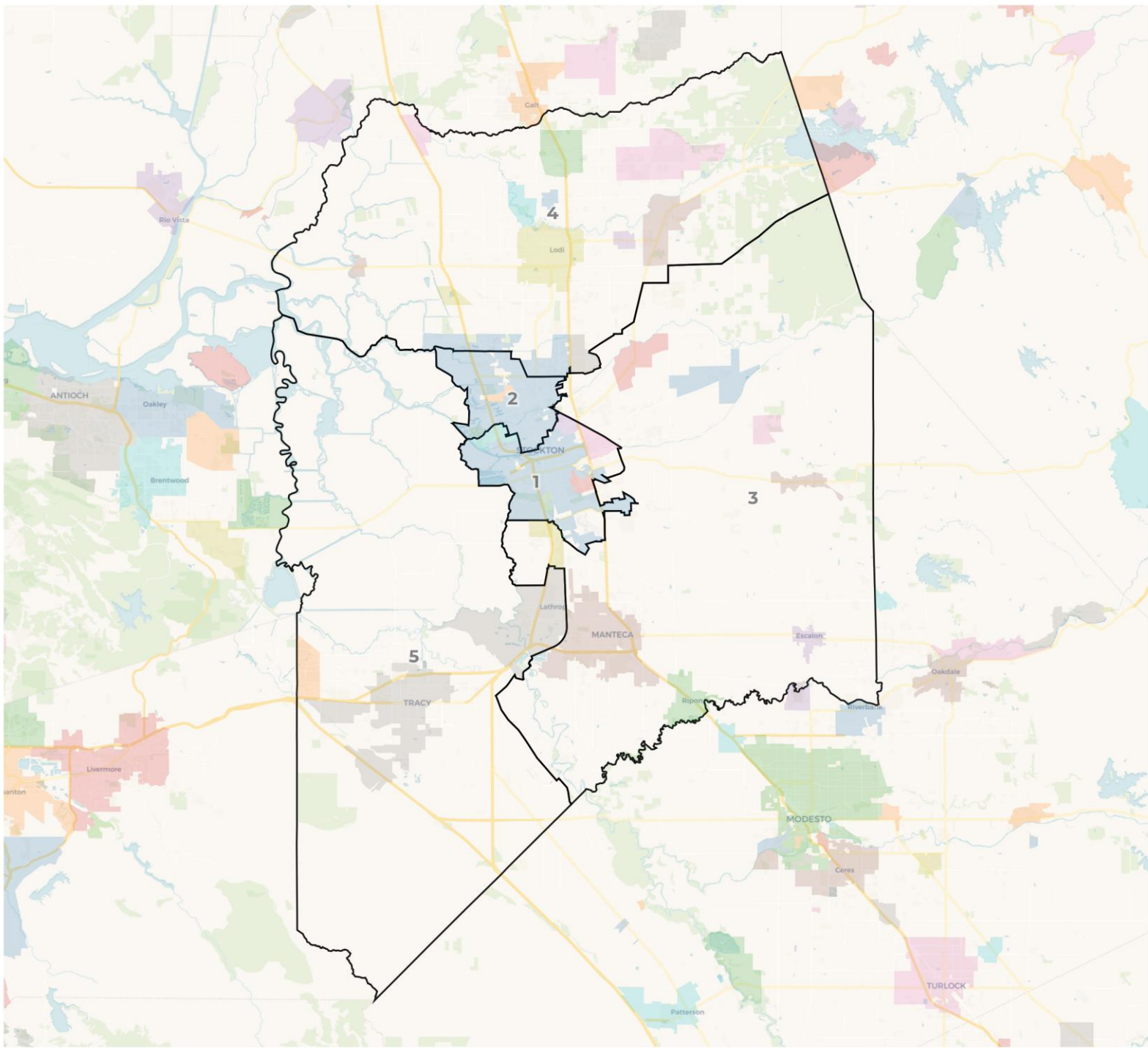
DistrictR Map ID 48331 with the following changes:

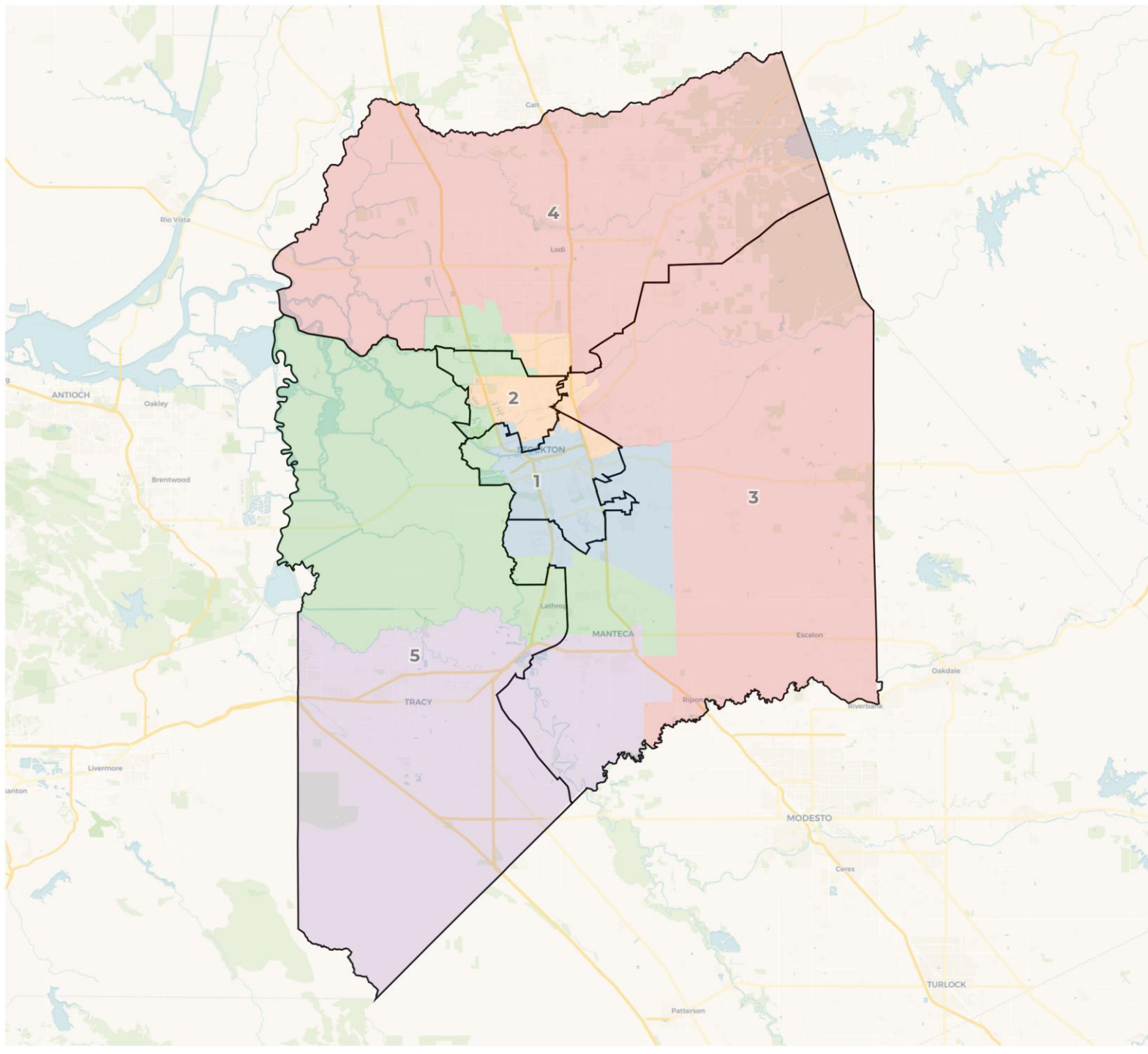
- Move Lockeford into District 4
- Move the Delta into District 2 and 5

Draft Plan A

ID 48331







2020 Census

	1	2	3	4	5
Population	151,295	163,478	149,105	156,686	156,749
Deviation	-4,168	8,015	-6,358	1,223	1,286
Deviation %	-2.7%	5.2%	-4.1%	0.8%	0.8%
Other	23,811	51,282	71,551	64,636	49,831
Other %	15.7%	31.4%	48.0%	41.3%	31.8%
Latino	96,535	61,939	58,391	53,181	55,132
Latino %	63.8%	37.9%	39.2%	33.9%	35.2%
Asian	16,472	29,824	14,523	31,894	41,973
Asian %	10.9%	18.2%	9.7%	20.4%	26.8%
Black	14,477	20,433	4,640	6,975	9,813
Black %	9.6%	12.5%	3.1%	4.5%	6.3%

Citizen Voting Age Population (CVAP)

	1	2	3	4	5
Total CVAP	70,341	105,417	96,246	95,995	80,999
Other CVAP	17,268	45,526	58,991	51,738	36,745
Other CVAP %	24.5%	43.2%	61.3%	53.9%	45.4%
Latino CVAP	35,387	29,381	27,355	21,763	24,799
Latino CVAP %	50.3%	27.9%	28.4%	22.7%	30.6%
Asian CVAP	8,064	17,640	5,639	17,758	14,404
Asian CVAP %	11.5%	16.7%	5.9%	18.5%	17.8%
Black CVAP	9,622	12,870	4,260	4,736	5,051
Black CVAP %	13.7%	12.2%	4.4%	4.9%	6.2%

Draft Plan A2 Smooth (D1 Compact)

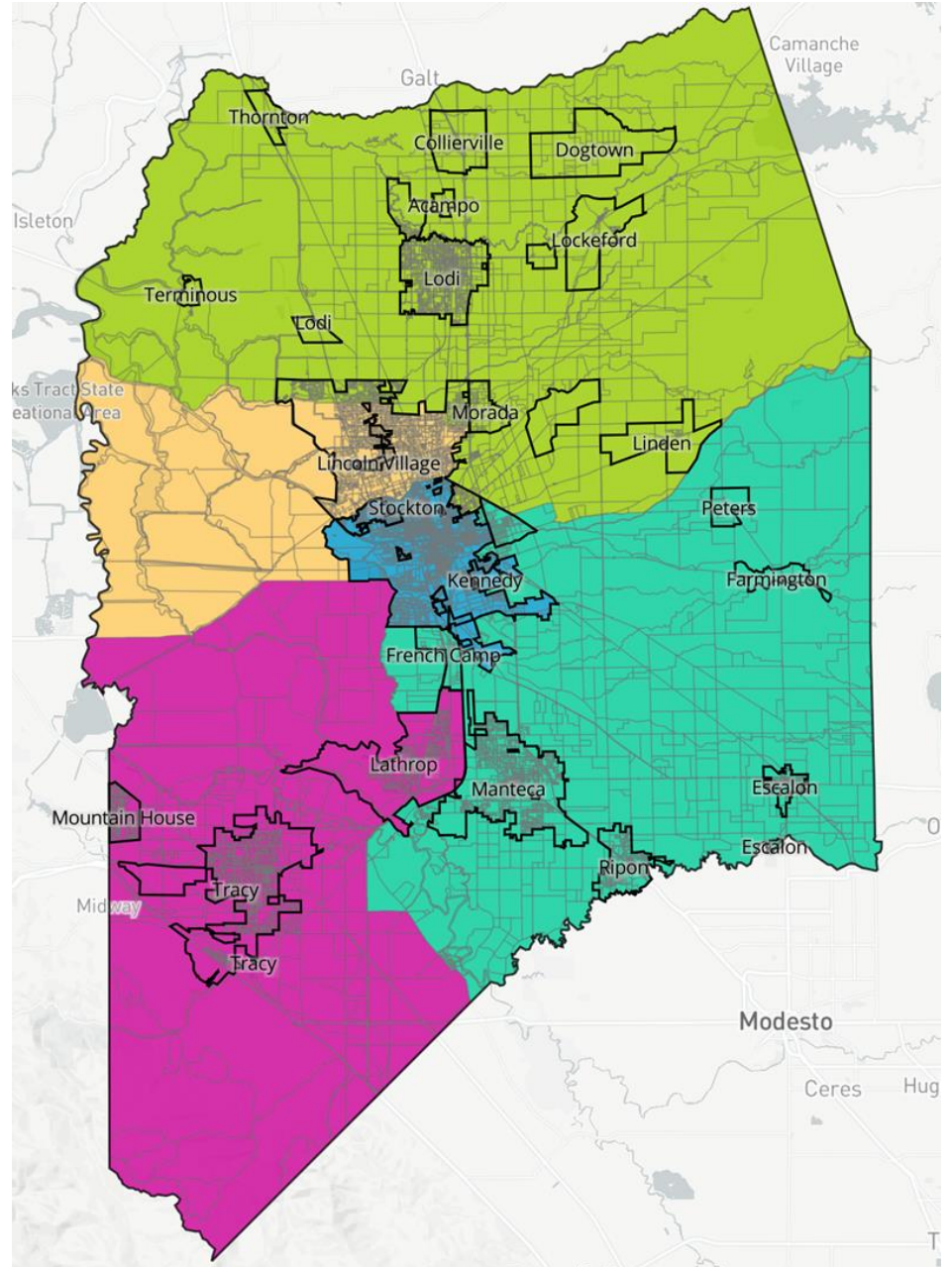
Based on the map received via DistrictR with changes to comply with the Federal Voting Rights Act, the Fair Maps Act, and other public input.

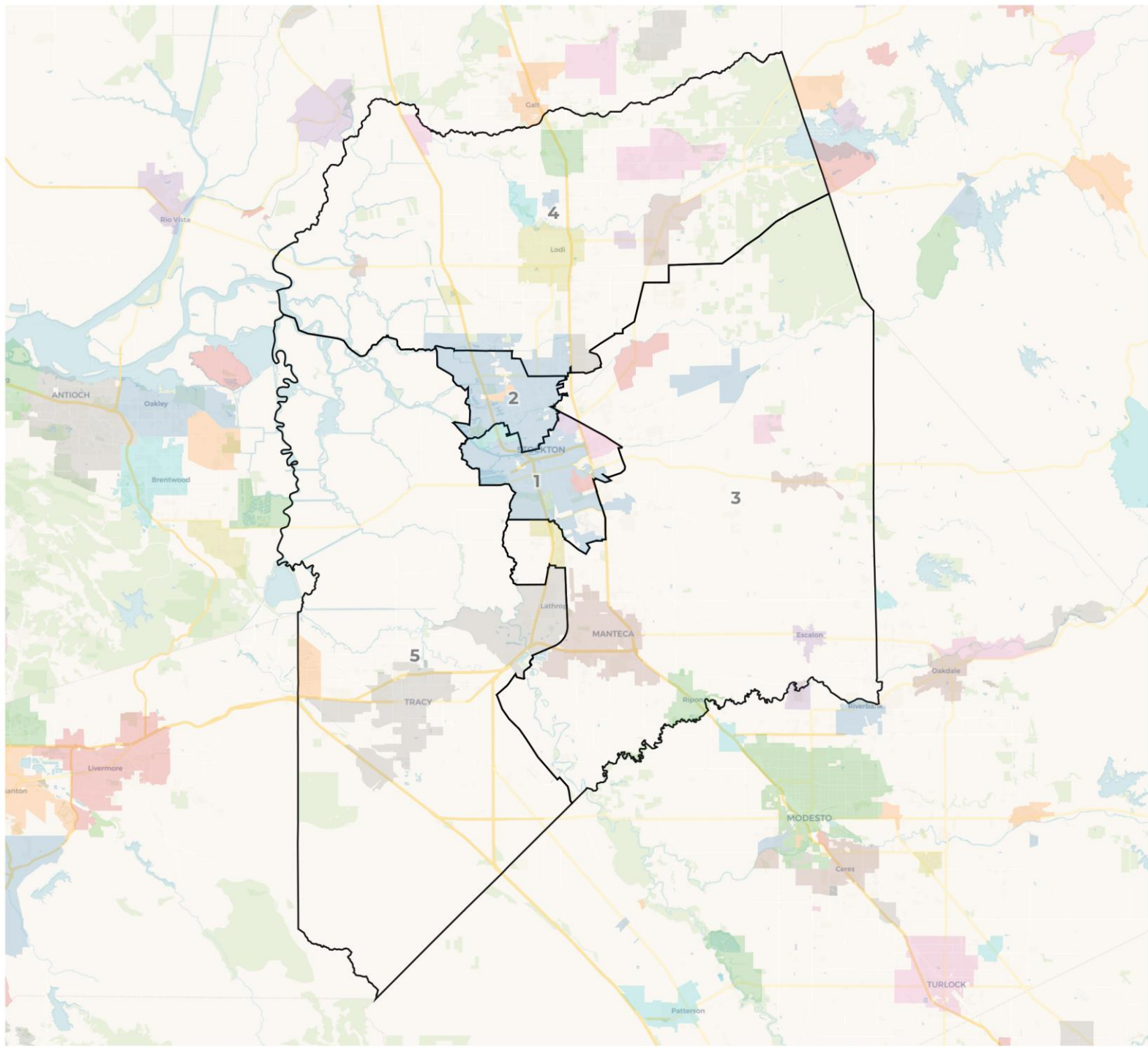
DistrictR Map ID 48331 with the following changes:

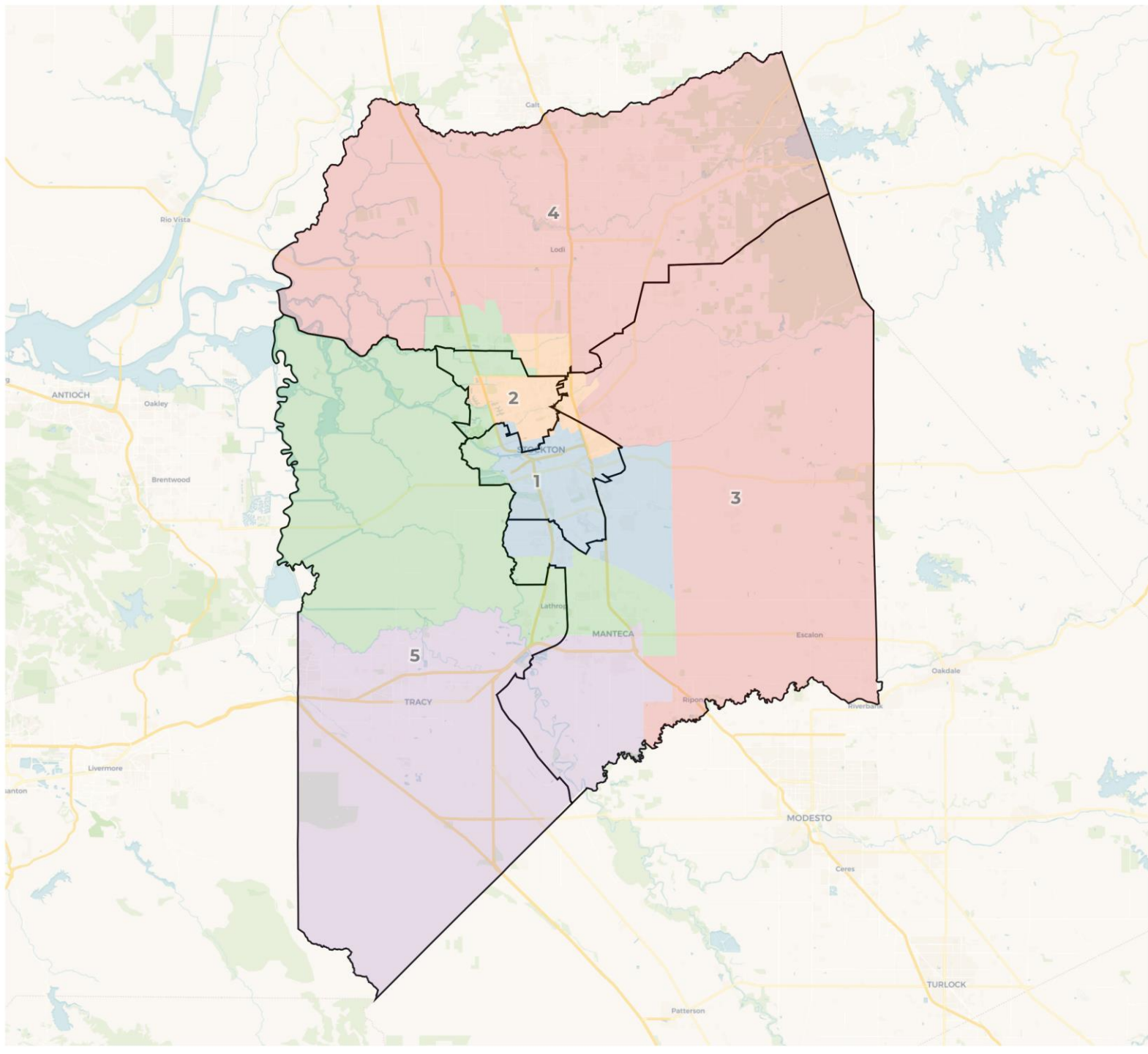
- Move Lockeford into District 4
- Move the Delta into District 2 and 5
- Removes the eastern hand within Stockton from District 1

Draft Plan A

ID 48331







2020 Census

	1	2	3	4	5
Population	151,295	163,478	149,105	156,686	156,749
Deviation	-4,168	8,015	-6,358	1,223	1,286
Deviation %	-2.7%	5.2%	-4.1%	0.8%	0.8%
Other	23,811	51,282	71,551	64,636	49,831
Other %	15.7%	31.4%	48.0%	41.3%	31.8%
Latino	96,535	61,939	58,391	53,181	55,132
Latino %	63.8%	37.9%	39.2%	33.9%	35.2%
Asian	16,472	29,824	14,523	31,894	41,973
Asian %	10.9%	18.2%	9.7%	20.4%	26.8%
Black	14,477	20,433	4,640	6,975	9,813
Black %	9.6%	12.5%	3.1%	4.5%	6.3%

Citizen Voting Age Population (CVAP)

	1	2	3	4	5
Total CVAP	70,340	105,417	96,247	95,995	80,999
Other CVAP	17,268	45,526	58,992	51,738	36,745
Other CVAP %	24.5%	43.2%	61.3%	53.9%	45.4%
Latino CVAP	35,387	29,381	27,356	21,763	24,799
Latino CVAP %	50.3%	27.9%	28.4%	22.7%	30.6%
Asian CVAP	8,064	17,640	5,639	17,758	14,404
Asian CVAP %	11.5%	16.7%	5.9%	18.5%	17.8%
Black CVAP	9,622	12,870	4,261	4,736	5,051
Black CVAP %	13.7%	12.2%	4.4%	4.9%	6.2%

Draft Plan B2

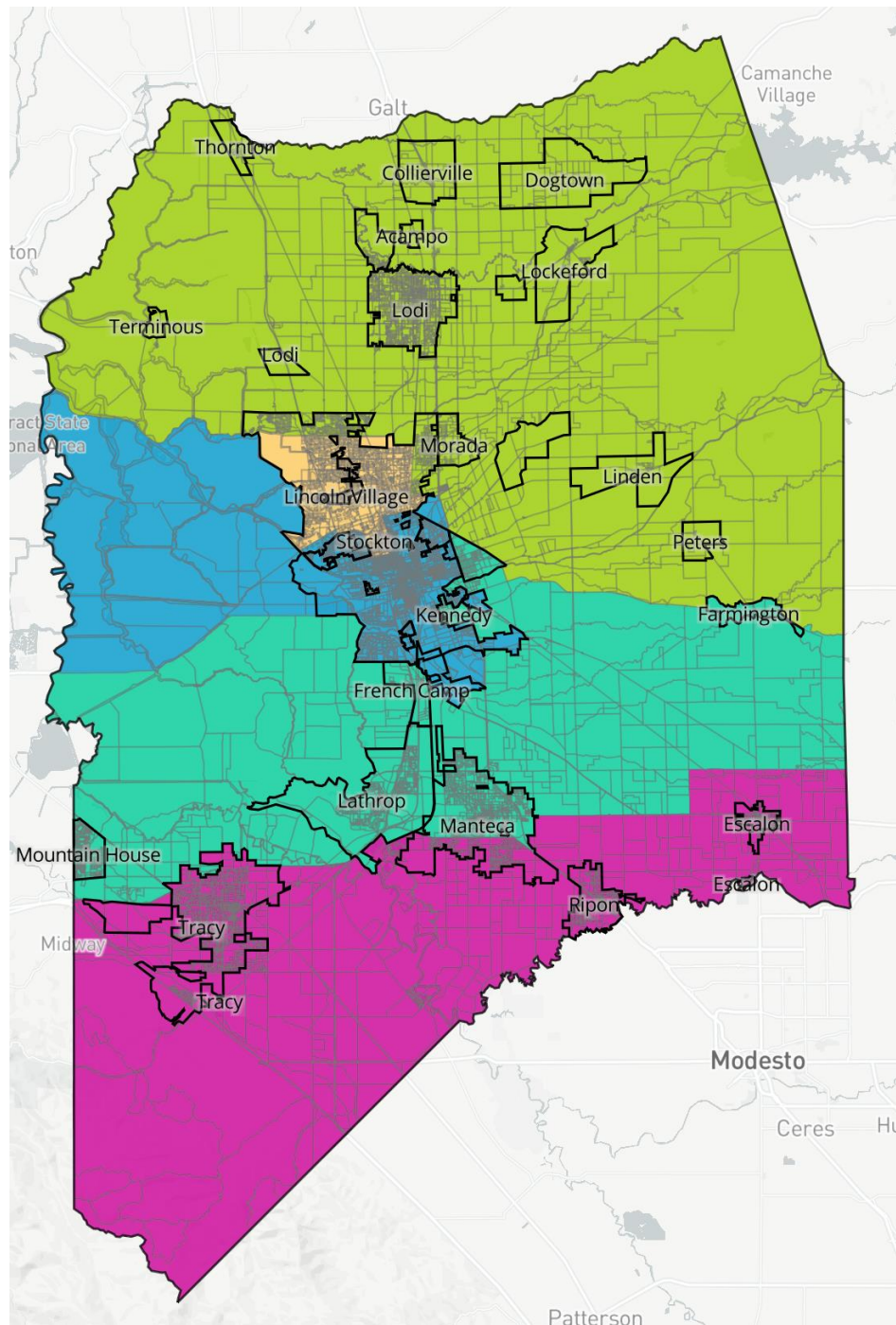
Based on the map received via DistrictR with changes to comply with the Federal Voting Rights Act, the Fair Maps Act, and other public input.

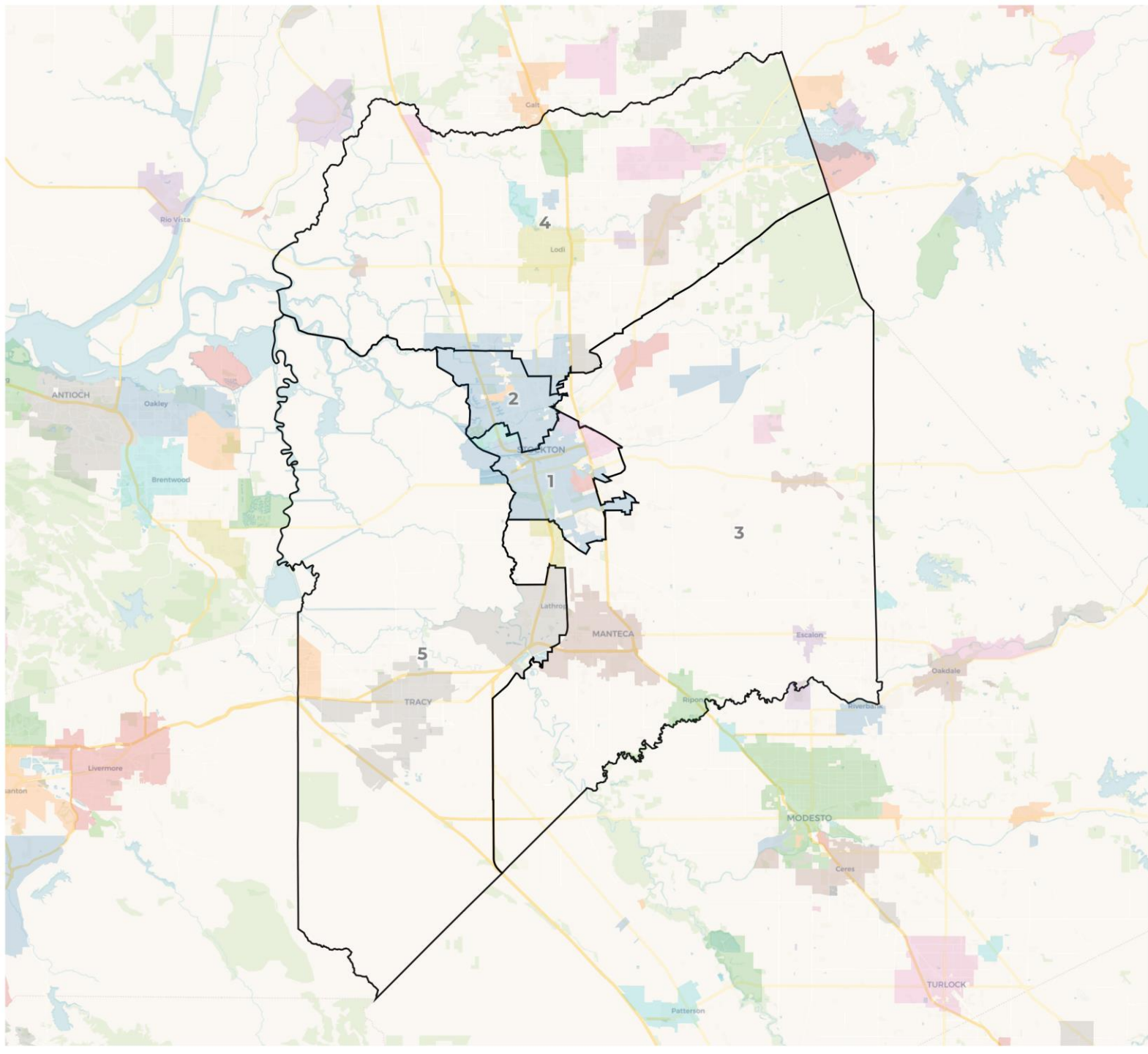
DistrictR Map ID 49596 with the following changes:

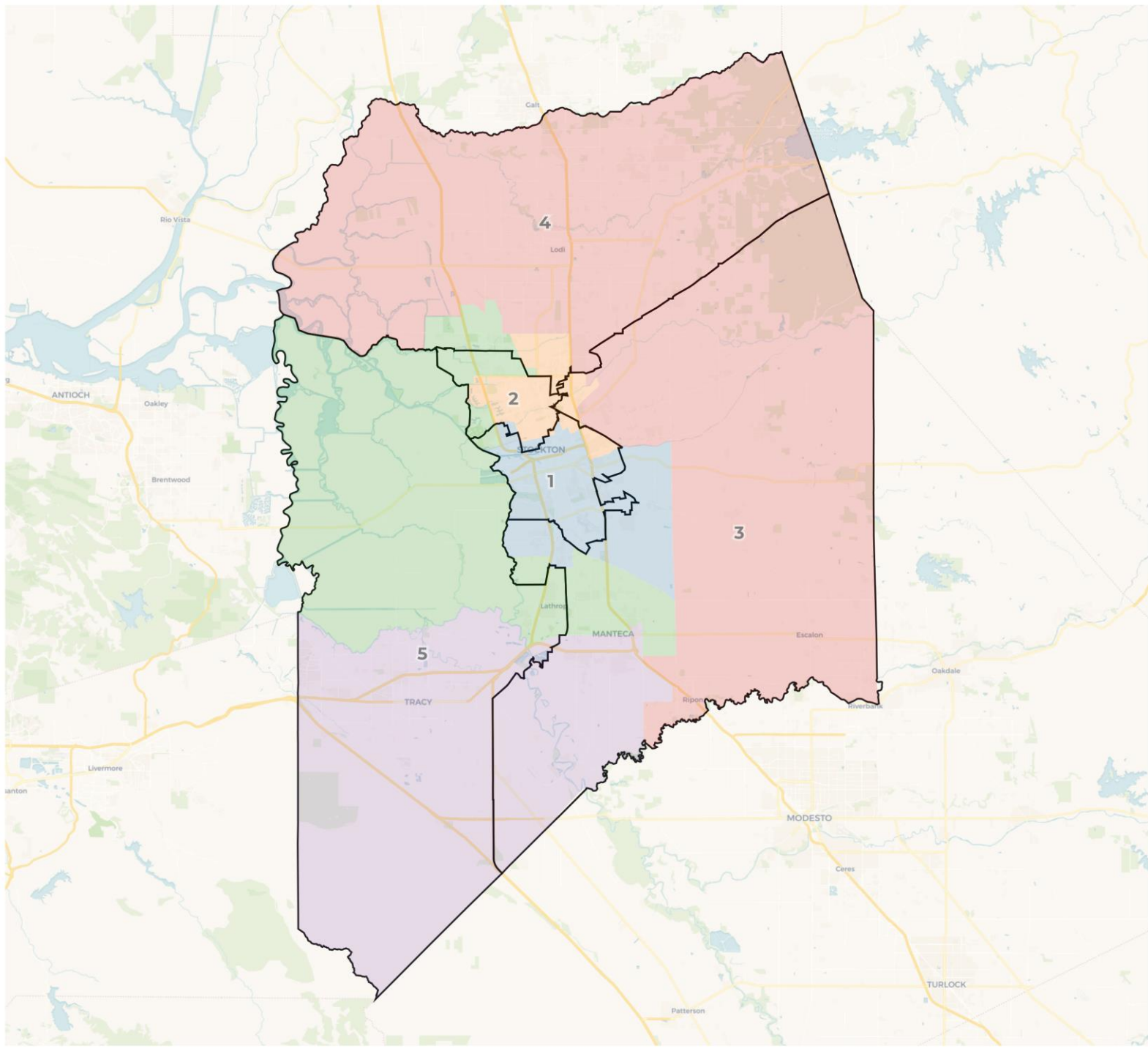
- Unite Tracy and Mountain House into District 5
- Move Ripon and Escalon into District 3
- Unify Manteca

Draft Plan B

ID 49596







2020 Census

	1	2	3	4	5
Population	151,289	160,082	147,441	161,229	157,272
Deviation	-4,174	4,619	-8,022	5,766	1,809
Deviation %	-2.7%	3.0%	-5.2%	3.7%	1.2%
Other	23,807	50,944	70,843	65,537	49,980
Other %	15.7%	31.8%	48.0%	40.6%	31.8%
Latino	96,533	61,130	57,965	54,549	55,001
Latino %	63.8%	38.2%	39.3%	33.8%	35.0%
Asian	16,472	27,838	14,035	33,902	42,439
Asian %	10.9%	17.4%	9.5%	21.0%	27.0%
Black	14,477	20,170	4,598	7,241	9,852
Black %	9.6%	12.6%	3.1%	4.5%	6.3%

Citizen Voting Age Population (CVAP)

	1	2	3	4	5
Total CVAP	70,310	103,123	96,099	99,010	80,456
Other CVAP	17,254	45,032	58,943	52,728	36,312
Other CVAP %	24.5%	43.7%	61.3%	53.3%	45.1%
Latino CVAP	35,373	28,781	27,308	22,557	24,667
Latino CVAP %	50.3%	27.9%	28.4%	22.8%	30.7%
Asian CVAP	8,062	16,656	5,606	18,757	14,422
Asian CVAP %	11.5%	16.2%	5.8%	18.9%	17.9%
Black CVAP	9,621	12,654	4,243	4,968	5,054
Black CVAP %	13.7%	12.3%	4.4%	5.0%	6.3%

Draft Plan B2 Smooth (D1 Compact)

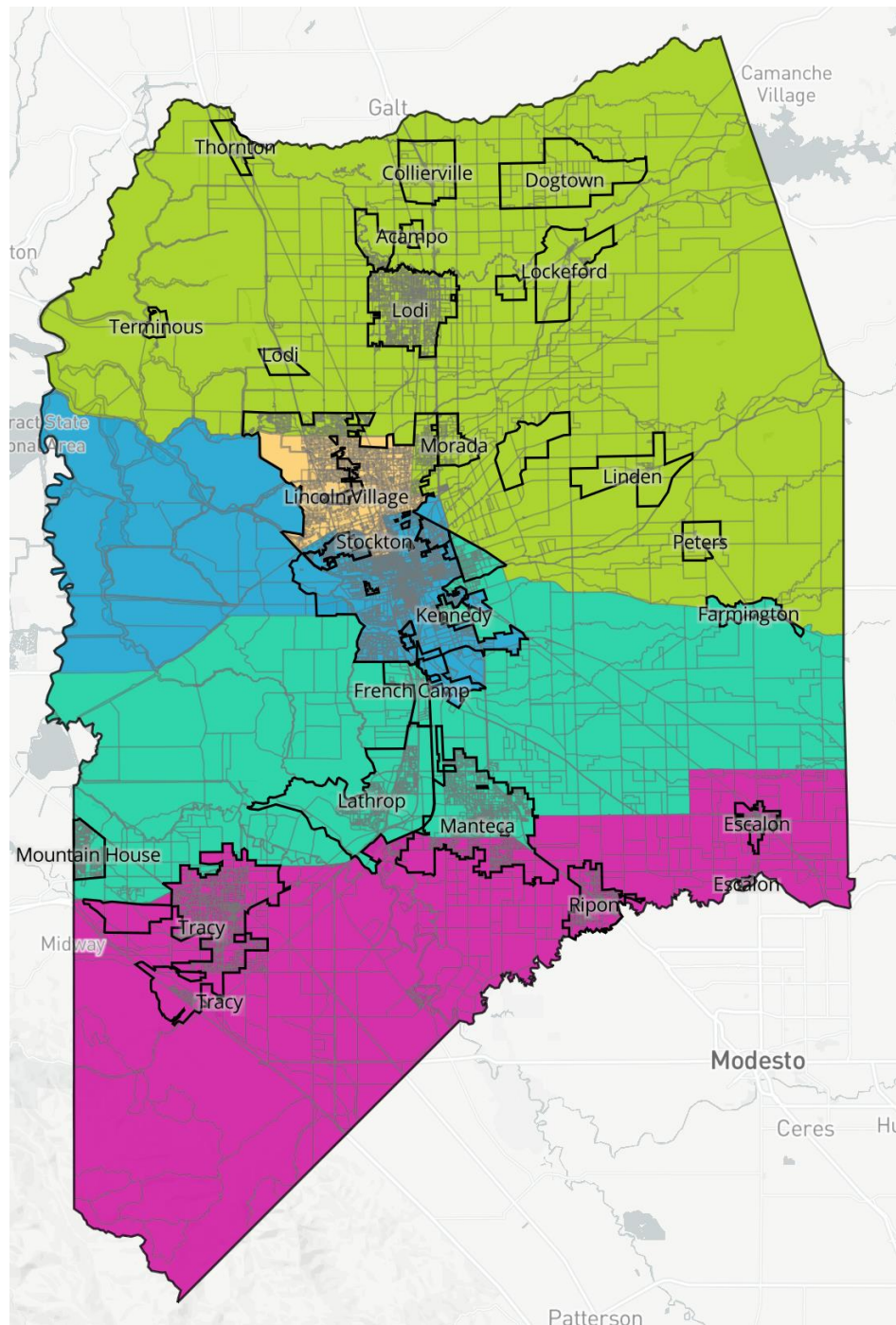
Based on the map received via DistrictR with changes to comply with the Federal Voting Rights Act, the Fair Maps Act, and other public input.

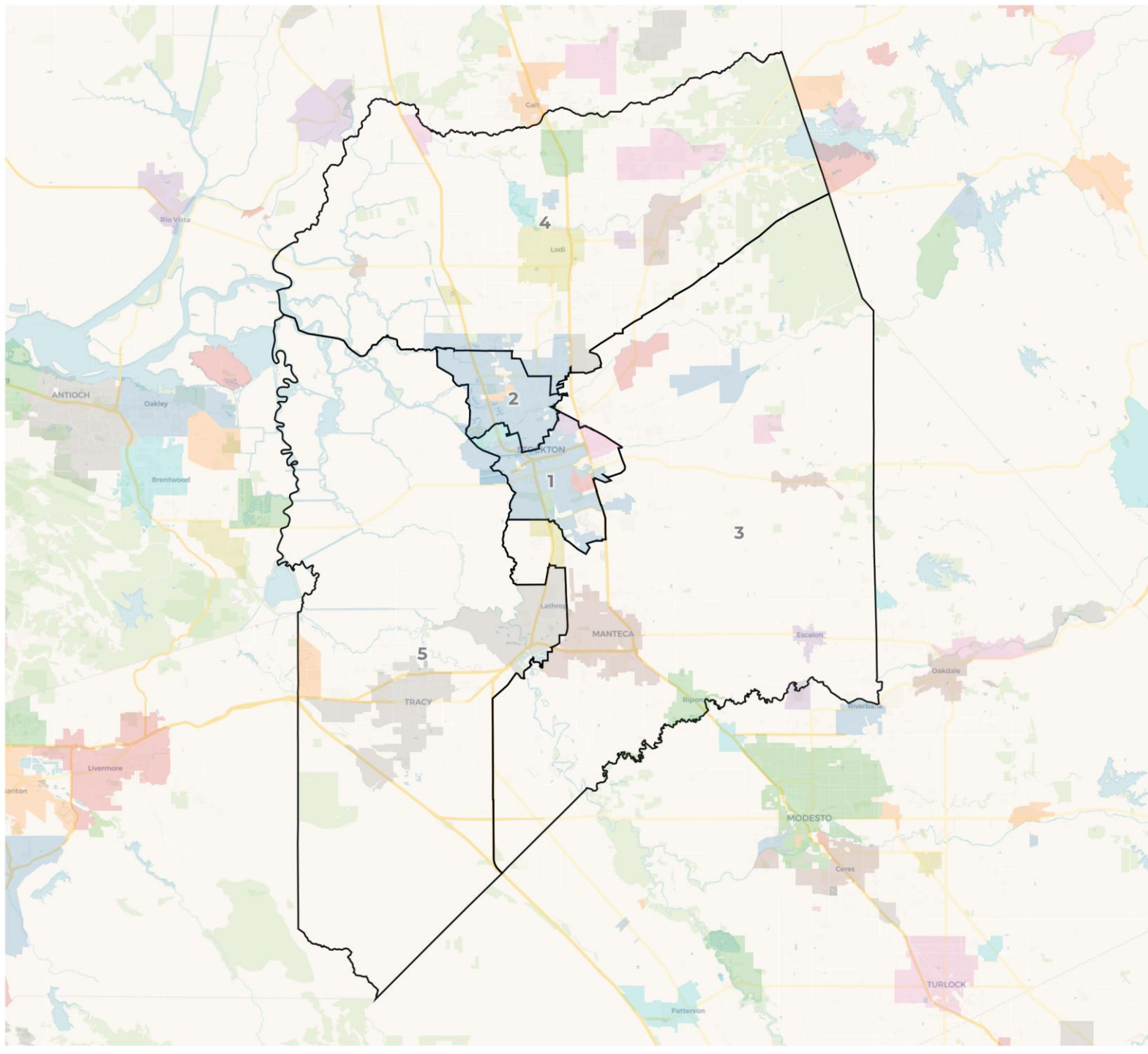
DistrictR Map ID 49596 with the following changes:

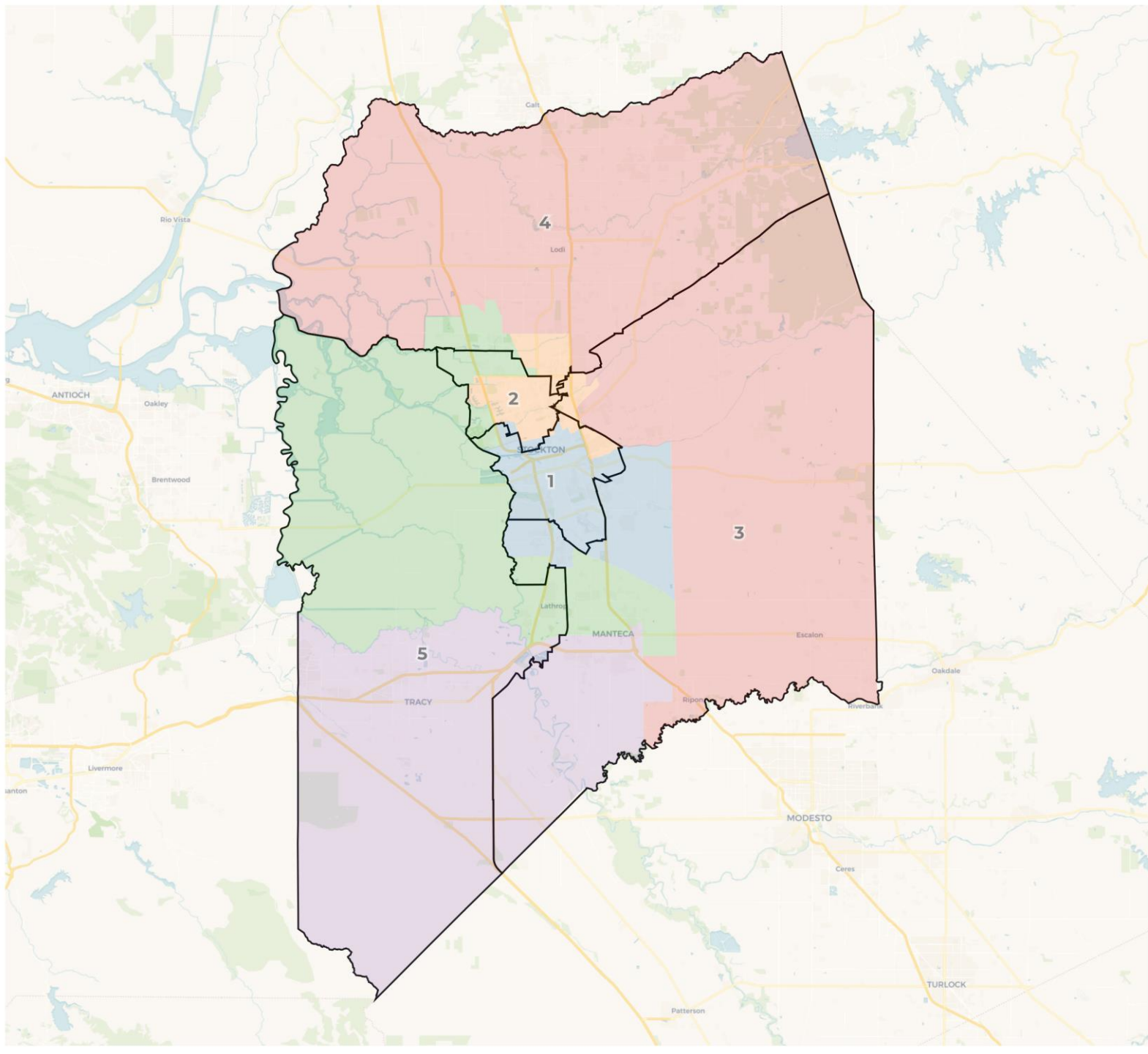
- Unite Tracy and Mountain House into District 5
- Move Ripon and Escalon into District 3
- Unify Manteca
- Removes the eastern hand within Stockton from District 1

Draft Plan B

ID 49596







2020 Census

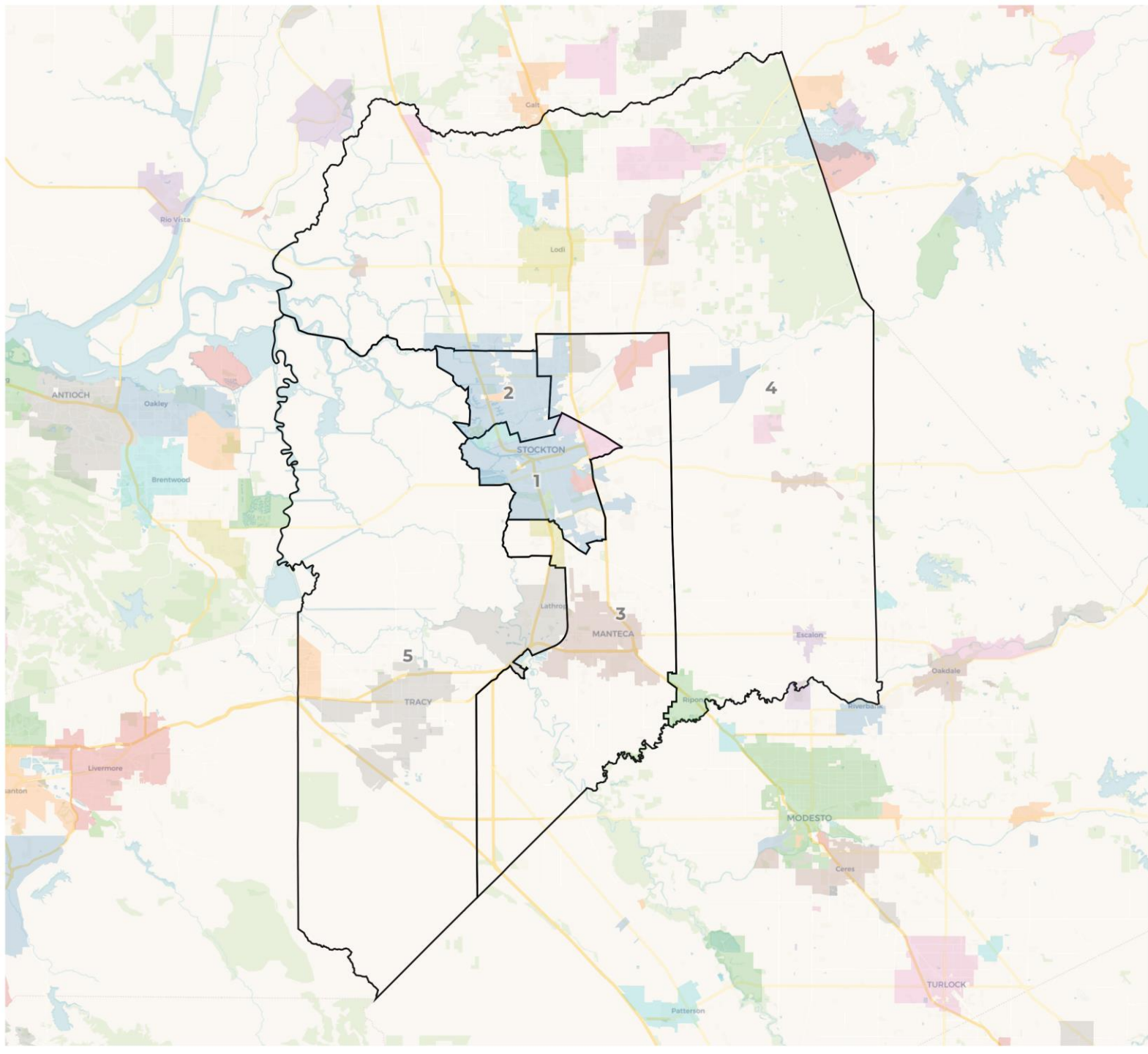
	1	2	3	4	5
Population	151,289	160,082	147,441	161,229	157,272
Deviation	-4,174	4,619	-8,022	5,766	1,809
Deviation %	-2.7%	3.0%	-5.2%	3.7%	1.2%
Other	23,807	50,944	70,843	65,537	49,980
Other %	15.7%	31.8%	48.0%	40.6%	31.8%
Latino	96,533	61,130	57,965	54,549	55,001
Latino %	63.8%	38.2%	39.3%	33.8%	35.0%
Asian	16,472	27,838	14,035	33,902	42,439
Asian %	10.9%	17.4%	9.5%	21.0%	27.0%
Black	14,477	20,170	4,598	7,241	9,852
Black %	9.6%	12.6%	3.1%	4.5%	6.3%

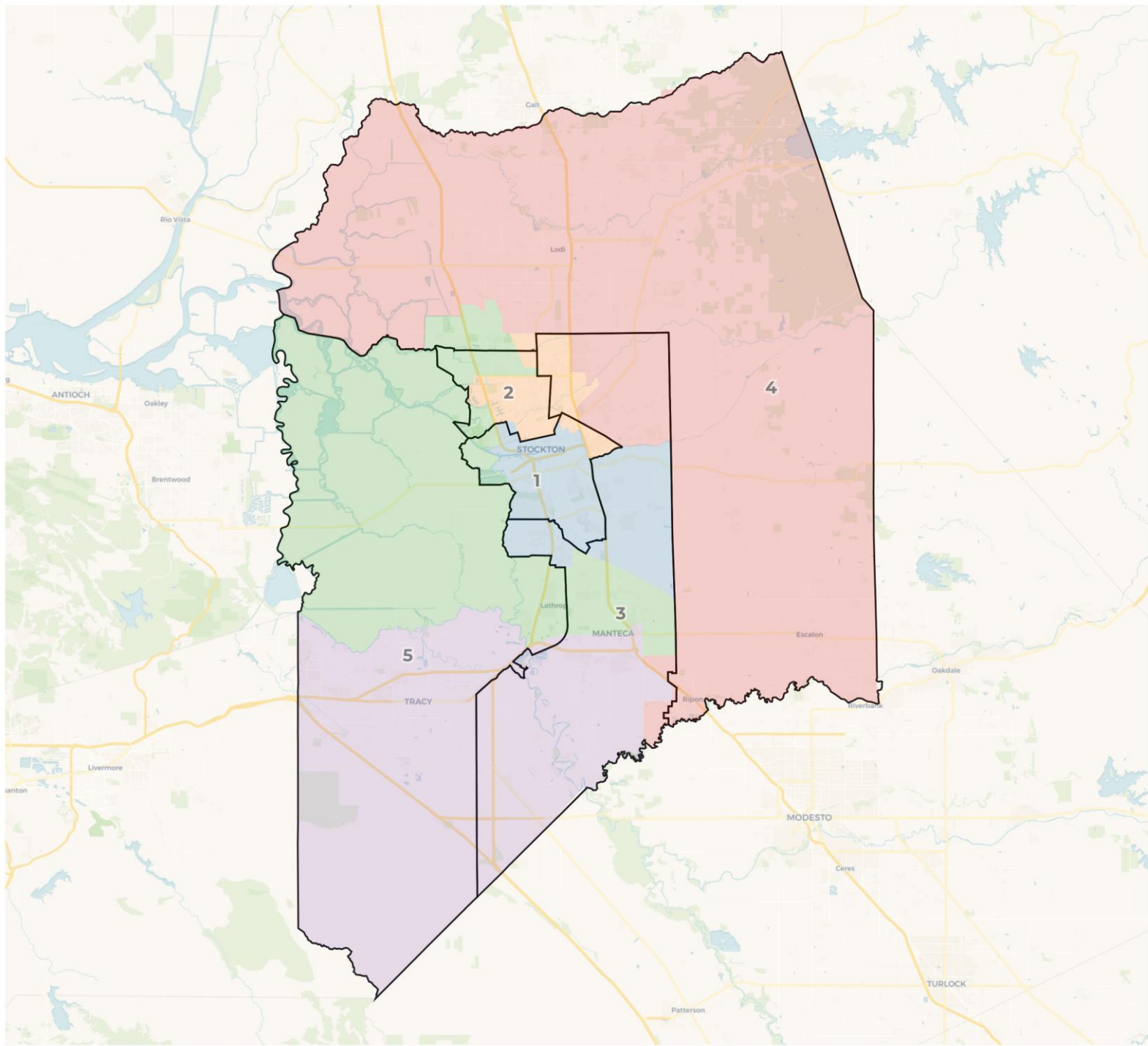
Citizen Voting Age Population (CVAP)

	1	2	3	4	5
Total CVAP	70,309	103,123	96,100	99,010	80,456
Other CVAP	17,254	45,032	58,943	52,728	36,312
Other CVAP %	24.5%	43.7%	61.3%	53.3%	45.1%
Latino CVAP	35,373	28,781	27,308	22,557	24,667
Latino CVAP %	50.3%	27.9%	28.4%	22.8%	30.7%
Asian CVAP	8,061	16,656	5,606	18,757	14,422
Asian CVAP %	11.5%	16.2%	5.8%	18.9%	17.9%
Black CVAP	9,621	12,654	4,243	4,968	5,054
Black CVAP %	13.7%	12.3%	4.4%	5.0%	6.3%

Draft Plan D

Based on input from the public, DistrictR submissions, and discussions with the RAC, this map was developed to keep the cores of current district intact.





2020 Census

	1	2	3	4	5
Population	155,292	154,908	154,570	156,535	156,008
Deviation	-171	-555	-893	1,072	545
Deviation %	-0.1%	-0.4%	-0.6%	0.7%	0.4%
Other	25,447	49,074	55,171	82,124	49,295
Other %	16.4%	31.7%	35.7%	52.5%	31.6%
Latino	97,433	58,061	60,540	54,230	54,914
Latino %	62.7%	37.5%	39.2%	34.6%	35.2%
Asian	16,662	28,332	31,129	16,583	41,980
Asian %	10.7%	18.3%	20.1%	10.6%	26.9%
Black	15,750	19,441	7,730	3,598	9,819
Black %	10.1%	12.6%	5.0%	2.3%	6.3%

Citizen Voting Age Population (CVAP)

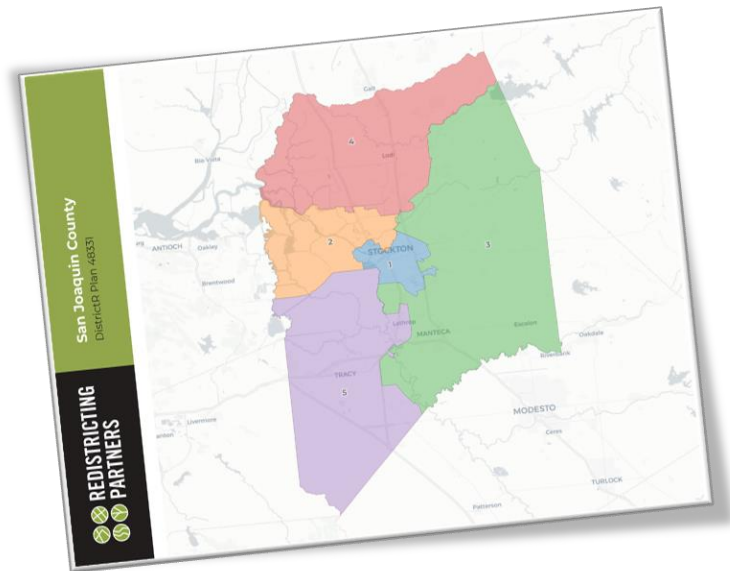
	1	2	3	4	5
Total CVAP	73,385	100,581	96,475	98,069	80,488
Other CVAP	18,521	43,407	47,912	64,243	36,186
Other CVAP %	25.2%	43.2%	49.7%	65.5%	45.0%
Latino CVAP	36,291	27,748	28,223	21,768	24,656
Latino CVAP %	49.5%	27.6%	29.3%	22.2%	30.6%
Asian CVAP	8,111	16,819	14,413	9,616	14,544
Asian CVAP %	11.1%	16.7%	14.9%	9.8%	18.1%
Black CVAP	10,462	12,608	5,926	2,443	5,101
Black CVAP %	14.3%	12.5%	6.1%	2.5%	6.3%

From COI to Draft Maps

Getting from input to new proposed maps

All maps approved as “Draft” maps will be placed on redistricting website for public feedback.

- Written input
- Public comment and next hearing



From COI to Draft Maps

Getting from input to new proposed maps

Future hearings will allow for changes to the Drafts prior to adoption

- Hearing on draft maps
- Selection of recommended plan for the Board of Supervisors consideration



Redistricting Timeline



Public Workshops



Census Data



Public Meetings



Draft Maps
Published



Adoption
Hearing

Public Outreach and Education

Community Meetings

Public Hearings

AUG

AUGUST 17
Outreach #1

SEPT

SEPTEMBER 15
Outreach #2

SEPTEMBER 29
Outreach #3

OCT

OCTOBER 13
Meeting #1

OCTOBER 27
Meeting #2

NOV

NOVEMBER 10
MEETING #3

NOVEMBER 16
Present Final Maps

DEC

DECEMBER 7
Approve Final Map

Next Steps

November 10th Draft Plan Revisions

At our next meeting, we'll be selecting a plan or plans to recommend to the Board of Supervisors.



**REDISTRICTING
PARTNERS**